

Beautiful Peacock



All images © Stampin' Up!®

Stampin' Up! Supplies:

- STAMPS – Beautiful Peacock (Photopolymer 147239).
- PAPER – Shimmery White (101910), Dapper Denim (141414)
- INK – Versamark (102283), Dapper Denim (141394)
- OTHER –Brusho (144101), Copper Emboss Powder (141636), Clear Emboss Powder (109130), Embossing Buddy (103083), Heat Tool (129053), Stamp-A-Ma-Jig (101049), Stampin' Dimensionals (104430), Stampin' Spritzer (126185)

Cutting & Scoring:

- Dapper Denim – 5 ½" x 8 ½"
- Dapper Denim – 2 ½" x 2 ½"
- Dapper Denim – ¾" x 3 ¼"
- Shimmery White – (2) 4" x 5 ¼"
- Shimmery White – 2 ¼" x 2 ¼"
- Shimmery White – ½" x 3"

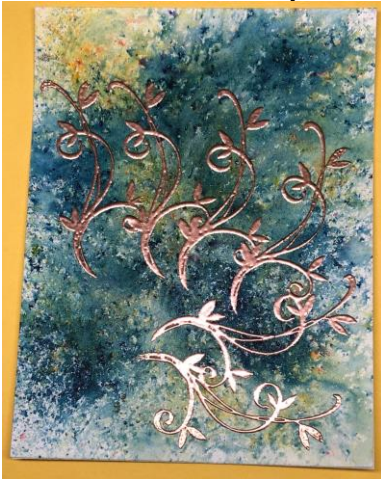
Card Instructions:

- Spritz one piece of Shimmery White CS lightly with water
- Sprinkle Brilliant Blue, Yellow and Moss Green Brusho on Shimmery White CS
- Spritz again 4 or 5 times, dab away any excess with paper towels
- Sandwich between paper towels and place something heavy on the paper to allow it to dry flat
- Repeat above steps on second piece of Shimmer White trying to leave center white so you can write a message. Make sure both pieces of Shimmery White are completely dry. Do not dry with heat tool as this may cause more curling
- Repeat above steps on 2 ¼" x 2 ¼" Shimmery White

- Once all Shimmery White is completely dry, rub all Shimmery White CS with embossing buddy
- Stamp Peacock feathers on 2 ¼" x 2 ¼" Shimmery White with Versamark Ink
- Pour Copper Emboss Powder over, heat set
- Use Stamp A Ma Jig to line up Peacock Body, stamp with Dapper Denim



- Adhere this layer to the Dapper Denim 2 ½" x 2 ½" layer with Dimensionals
- Immediately pour Clear Emboss Powder over Peacock Body, heat set
- Stamp longer Peacock Feathers on one piece of Brusho Shimmery White CS
- Pour Copper Emboss Powder over stamped image, heat set (NOTE: You may find it easier to stamp one feather at a time so that you can see where you stamped previous ones)



- Adhere this layer of Shimmery White to the Dapper Denim card base with Fast Fuse
- Adhere the Stamped Peacock/Dapper Denim layer to the card front with Dimensionals

INSIDE OF CARD:

- Stamp two long feathers on the bottom of second Shimmery White CS with Versamark
- Pour Copper Emboss Powder over stamped image, heat set
- Adhere this layer to inside of card with Fast Fuse
- Stamp "Today is all about You" on Shimmery White ½" x 3" with Dapper Denim
- Adhere this layer to Dapper Denim Layer with Fast Fuse
- Adhere both layers to inside of card with Fast Fuse